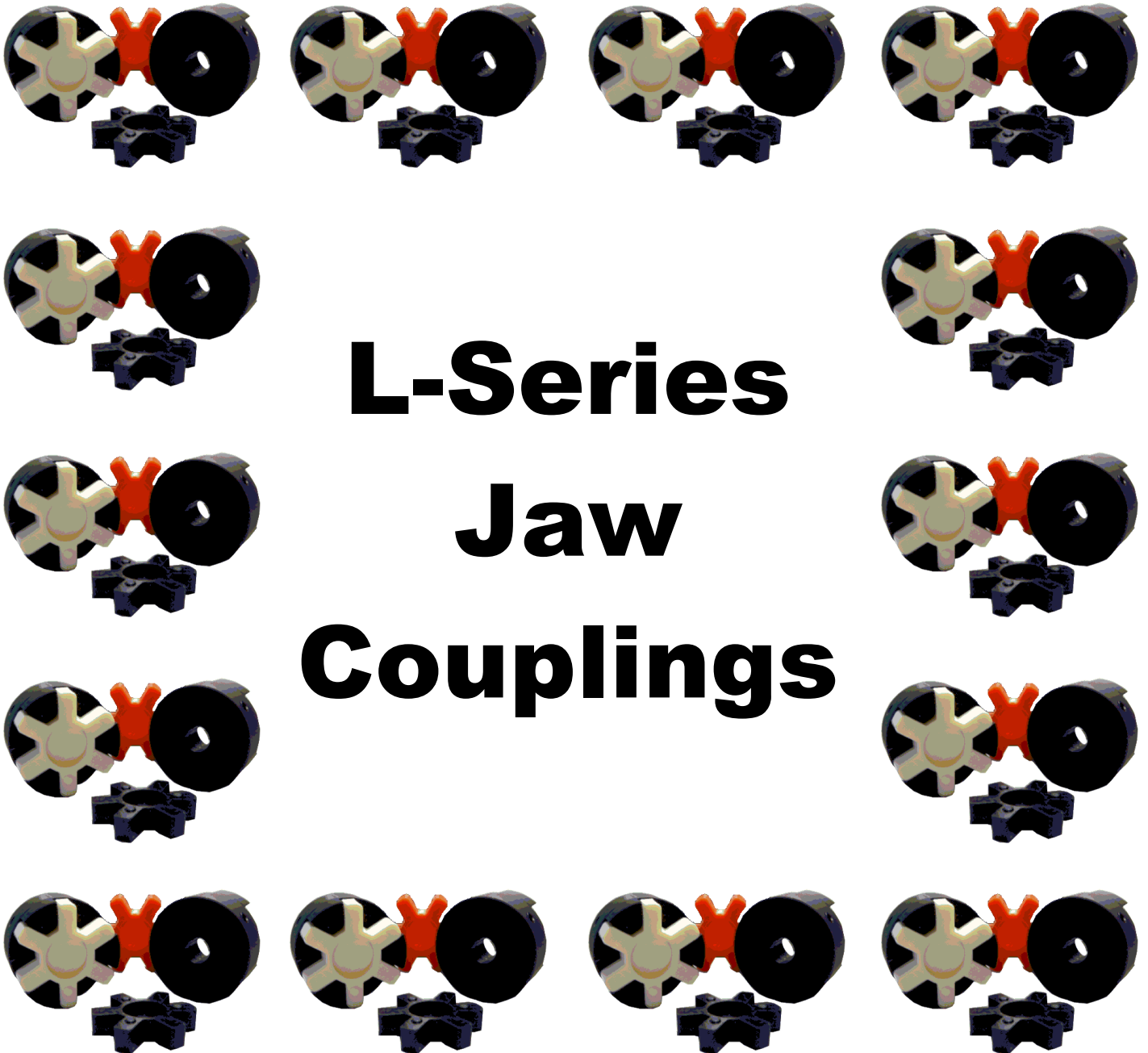




---

## L-Series Jaw Couplings

---



# L-Series Jaw Couplings

**Hayes Manufacturing, Inc.**

6875 U.S. 131

Fife Lake, MI 49633

Phone: (231) 879-3372 Fax: (231) 879-4330

Visit us at [www.hayescouplings.com](http://www.hayescouplings.com)



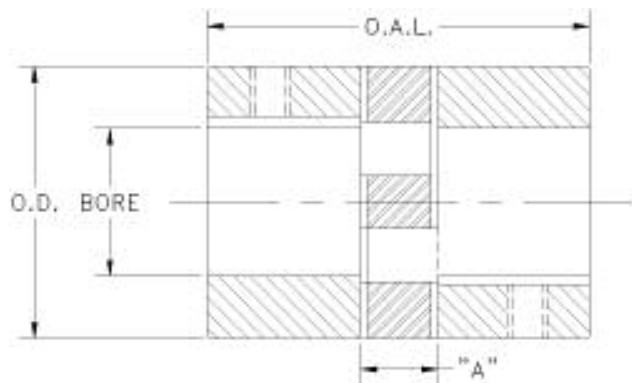
## Jaw Couplings (L – Series)

Our L-Series jaw coupling is offered in a large variety of bore and key options, as well as splines. These couplings are designed for a range of different applications using electrical motors as well as internal combustion engines. This design offers a standard shaft-to-shaft connection ideal for many industrial duty applications. In addition, you can interchange this coupling with other popular domestic brands. The addition of this product to our extensive list of power transmission products allows us to provide our customers with a diverse, and economical product line.

Couplings are sintered iron and available with a number of different drive elements: Buna-N, Urethane, and Hytrel

### Hayes L-Series Jaw Coupling Sizing Chart

Coupling #	Torque	O.D.	O.A.L.	A	Bore Metric		Bore Inch	
					Min	Max	Min	Max
L035	4 inlb	0.630	0.811	0.295	3	8	3/16	5/16
L050	26 inlb	1.083	1.701	0.480	6	16	1/4	5/8
L070	43 inlb	1.378	1.937	0.480	9	20	1/4	3/4
L075	90 inlb	1.752	2.142	0.488	9	26	5/16	1
L090	144 inlb	2.126	2.165	0.512	9	28	3/8	1- 1/8
L095	144 inlb	2.126	2.402	0.512	9	28	3/8	1- 1/8
L099	318 inlb	2.559	2.874	0.709	12	36	1/2	1- 3/8
L100	417 inlb	2.559	3.465	0.709	12	36	1/2	1- 3/8
L110	792 inlb	3.346	4.331	0.866	15	48	1/2	1- 7/8
L150	1240 inlb	3.780	4.665	1.047	15	48	5/8	1- 7/8
L190	1726 inlb	4.528	5.453	1.126	19	58	5/8	2- 1/4
L225	2340 inlb	5.000	6.004	1.126	19	60	3/4	2- 3/8



SEE NEXT PAGE FOR BORE OPTIONS AND SPECIFICATION

### Hayes Manufacturing, Inc.

6875 U.S. 131

Fife Lake, MI 49633

Phone: (231) 879-3372 Fax: (231) 879-4330

Visit us at [www.hayescouplings.com](http://www.hayescouplings.com)



### Coupling Rated Torque and HP Ratings

Coupling	Spider Materials								
	NBR			Urethane			Hytrel		
	Torque		HP at	Torque		HP at	Torque		HP at
	in-lbs	Nm	100 RPM	in-lbs	Nm	100 RPM	in-lbs	Nm	100 RPM
<b>L035</b>	3.5	0.4	0.006	-	-	-	-	-	-
<b>L050</b>	26.3	3	0.042	39	4.4	0.062	50	5.6	0.079
<b>L070</b>	43.2	4.9	0.069	65	7.3	0.103	114	12.9	0.181
<b>L075</b>	90	10.2	0.143	135	15.3	0.214	227	25.6	0.36
<b>L090</b>	144	16.3	0.228	216	24.4	0.343	401	45.3	0.636
<b>L095</b>	194	21.9	0.308	291	32.9	0.462	561	63.4	0.89
<b>L099</b>	318	35.9	0.505	477	53.9	0.757	792	89.5	1.257
<b>L100</b>	417	47.1	0.662	626	70.7	0.993	1134	128.1	1.799
<b>L110</b>	792	89.5	1.257	1188	134.2	1.885	2268	256.3	3.599
<b>L150</b>	1240	140.1	1.967	1860	210.2	2.951	3708	419	5.883
<b>L190</b>	1728	195.3	2.742	2592	292.9	4.113	4680	528.8	7.426
<b>L225</b>	2340	264.4	3.713	3510	369.6	5.569	6228	703.7	9.882

**Hayes Manufacturing, Inc.**

6875 U.S. 131

Fife Lake, MI 49633

Phone: (231) 879-3372 Fax: (231) 879-4330

Visit us at [www.hayescouplings.com](http://www.hayescouplings.com)



OPTIONS FOR SHAFT TO SHAFT COUPLINGS								
STANDARD			STANDARD			SEMI-STANDARD		
Option No.	Inch Sizes		Option No.	Metric Sizes		Option No.	Size	
	Bore (in)	Key (in)		Bore (mm)	Key (mm)		Bore	Key
-01	3/8	1/16	-51			-38	1/2	3/32
-02	7/16	3/32	-52			-39	5/8	5/32
-03	1/2	1/8	-53			-40	3/4	1/8
-04	9/16	1/8	-54	15	5	-41	7/8	1/4
-05	5/8	3/16	-55			-42	1	3/16
-06	11/16	3/16	-56	17	5	-43	1-1/4	5/16
-07	3/4	3/16	-57	18	6	-44	1-3/8	3/8
-08	13/16	3/16	-58	19	6	-45	1-1/2	5/16
-09	7/8	3/16	-59	20	6	-46	1-3/4	7/16
-10	15/16	1/4	-60	22	6	-47	.5295	1/8
-11	1	1/4	-61	24	8	-48		
-12	1-1/16	1/4	-62	25	8	-49	2-7/8	3/4
-13	1-1/8	1/4	-63			-50	BLANK	
-14	1-3/16	1/4	-64	28	8			
-15	1-1/4	1/4	-65	30	8			
-16	1-5/16	5/16	-66	32	10			
-17	1-3/8	5/16	-67	33	10			
-18	1-7/16	3/8	-68	35	10			
-19	1-1/2	3/8	-69					
-20	1-9/16	3/8	-70	38	10			
-21	1-5/8	3/8	-71	40	12			
-22	1-11/16	3/8	-72	42	12			
-23	1-3/4	3/8	-73	45	14			
-24	1-13/16	1/2	-74					
-25	1-7/8	1/2	-75	48	14			
-26	1-15/16	1/2	-76	50	14			
-27	2	1/2	-77	55	16			
-28	2-1/16	1/2	-78	60	18			
-29	2-1/8	1/2	-79	65	18			
-30	2-3/16	1/2	-80					
-31	2-1/4	1/2	-81					
-32	2-5/16	5/8	-82					
-33	2-3/8	5/8	-83					
-34	2-7/16	5/8	-84					
-35	2-1/2	5/8						
-36	2-5/8	5/8						
-37	2-3/4	5/8						

SPLINED COUPLING SIZES					
Option No.	Teeth	Pitch	P.A.	Major O.D.	Min. Series
-85					
-86	17	12/24	30	1.580	40
-87	11	16/32	30	.770	20
-88	9	16/32	30	.625	20
-89	15	16/32	30	1.000	20
-90	13	8/16	30	1.750	40
-91	13	16/32	30	.885	All
-92	14	12/24	30	1.250	20
-93	15	8/16	30	2.000	50
-94	21	16/32	30	1.375	30
-95	23	16/32	30	1.500	40
-96	27	16/32	30	1.750	40
-97					
-98	20	16/32	30	1.312	30
-99	Special Bore and Key (Per Customer)				

**Hayes Manufacturing, Inc.**

6875 U.S. 131

Fife Lake, MI 49633

Phone: (231) 879-3372 Fax: (231) 879-4330

Visit us at [www.hayescouplings.com](http://www.hayescouplings.com)